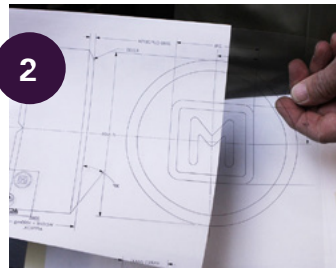
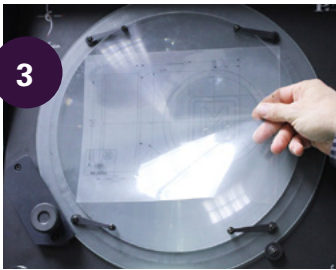
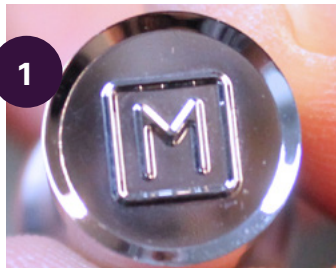


VISUAL INSPECTION SOLUTIONS

BEST PRODUCTS TO ENSURE TABLET QUALITY

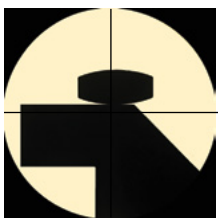
HORIZONTAL OPTICAL COMPARATOR

Soon to be your most versatile and most used piece of inspection equipment.

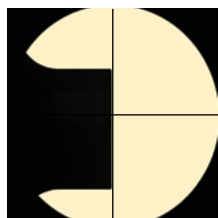


EASILY CONFIRM CONFORMANTS OF YOUR PUNCH CUP TO DRAWING.

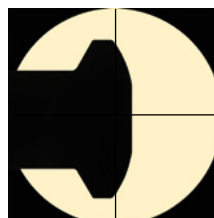
1. Punch tip to be inspected
2. A clear overlay is created from a tablet drawing (available from your tooling provider.)
3. Customized overlay is placed on screen
4. Easy adjustments are made to align overlay with punch tip



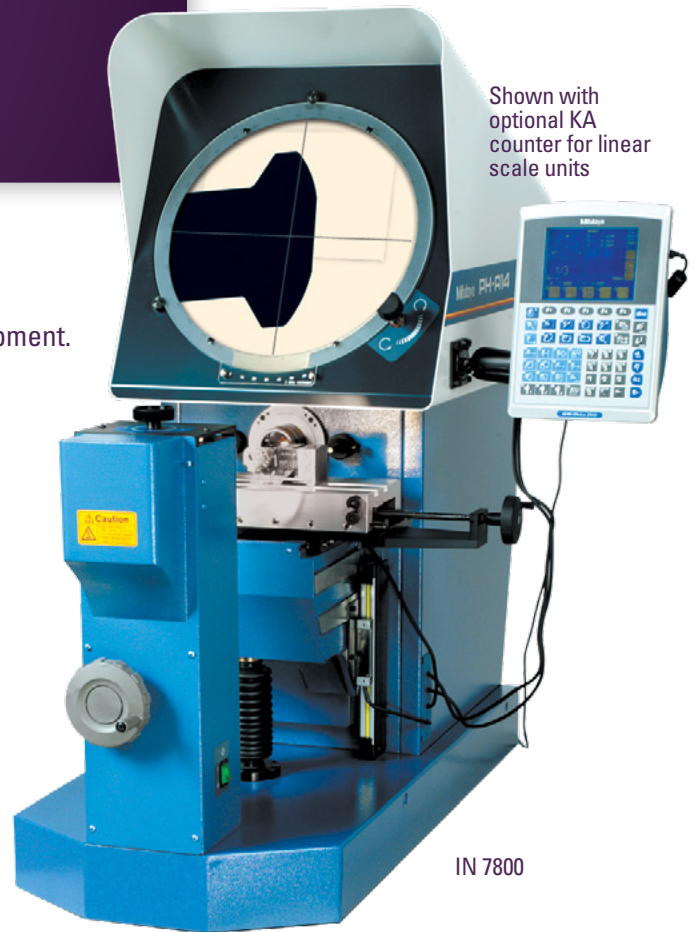
CHECKS TABLET PROFILE AND FLASHING



CHECKS TIP WEAR



CHECKS HEAD CONFIGURATON



Shown with optional KA counter for linear scale units

Perfect for inspecting punch tip wear, surface details of engraving, embossed logos, bisects, punch head profiles, and more.

KEY FEATURES & BENEFITS

- Clear images for error-free inspection of compression tooling and tablets
- 10x magnification
- Fiber illuminator included
- Factory-mounted linear glass scales for the display counter
- 120 VAC, 50/60 Hz
- Handles workloads up to 100 lb. (45 kg)
- Exterior Dimensions: 55.3" L x 25.5" W x 43.3" H (1355 x 648 x 1100mm)
- Generous 8" X and 4" Y access



HANDHELD DIGITAL MICROSCOPE

KEY FEATURES & BENEFITS

- 20X ~ 200X optical magnification, up to 500X digital magnification for small items such as tablets, punch cups and die bores
- Eight built-in LEDs
- Flip-out 3" TFT color LCD screen provides 960 x 240 pixel resolution
- 2592 x 1944 resolution (AVI video stored at 640 x 480 resolution)
- Images saved on microSD card (not included).
- Compatible with Windows 8/7/Vista/XP
- microUSB cable for downloading images and recharging
- Full charge provides up to four hours of operation.
- 5" L x 4 1/2" W x 1" D. (8 oz.)



IN 7975



IN 7950

DELUXE DIGITAL HANDHELD MICROSCOPE

KEY FEATURES & BENEFITS

- 10X ~ 50X, 240X variable magnification
- 5 mega-pixels
- 2584 x 1936 resolution
- Built-in polarizer for glare reduction
- 8 white built-in LEDs (On/Off)
- Built-In measurement feature with calibration
- Micro touch trigger for quick photos/videos
- Metal aluminum alloy encasement
- USB powered
- CE Compliant



PUNCH TIP DAMAGE PHOTO TAKEN WITH IN 7950

Natoli Engineering Company, Inc.

natoli.com • info@natoli.com • 636.926.8900 • 28 Research Park Circle, St. Charles, MO 63304

